

## Chapter 4: Port Mirroring



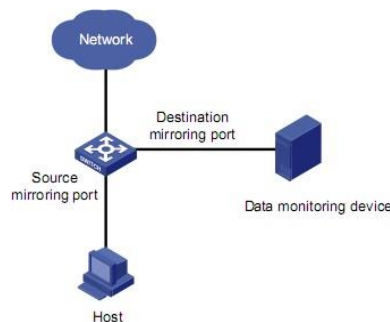
# Table of Contents

Chapter 4 Port Mirroring .....	2
4.1 Port Mirroring Overview .....	2
4.2 Configure Port Mirroring .....	2
4.2.1 Configure Port Mirroring .....	2
4.2.2 Configure the Mirror Destination Port .....	2
4.2.3 Configure the Mirror Source Port.....	3
4.2.4 Display Port Mirroring.....	3

# Chapter 4: Port Mirroring

## 4.1 Port Mirroring Overview

Mirroring refers to the process of copying packets that meet the specified rules to a destination port. Generally, a destination port is connected to a data detect device, which users can use to analyze the mirrored packets for monitoring and troubleshooting the network.



## 4.2 Configure Port Mirroring

### 4.2.1 Configure Port Mirroring

The source port is specified and whether the packets to be mirrored are ingress or egress is specified: ingress: only mirrors the packets received via the port; egress: only mirrors the packets sent by the port; both: mirrors the packets received and sent by the port at the same time. The destination port is specified.

### 4.2.2 Configure the Mirror Destination Port

Operation	Command	Remarks
Enter global mode	<b>system-view</b>	
Configure destination port (so called monitor port)	<b>mirror group</b> <i>group-id</i> <b>destination-interface ethernet</b> <i>interface-num</i>	
Delete destination monitor port	<b>undo mirror group</b> { all   <i>group-id</i> <b>destination-interface ethernet</b> <i>interface-num</i> }	

### 4.2.3 Configure the Mirror Source Port

Operation	Command	Remarks
Enter global mode	<b>system-view</b>	
Configure source port	<b>mirror group</b> group-id <b>source-interface</b>  { ethernet   cpu } <i>interface-list</i> {  both   egress   ingress }	
Delete source monitor port	<b>undo mirror group</b> { all   <i>group-id</i>  source-interface { cpu   <i>interface-list</i> }	

#### 【Example】

! Configure Ethernet ports 1 and 2 as mirror source ports

[Switch] mirror group 1 source-interface ethernet 0/0/1 to ethernet 0/0/2 both

### 4.2.4 Display Port Mirroring

Operation	Command	Remarks
Display port mirroring	<b>display mirror group</b> { all   <i>group-id</i> }	

#### 【Example】

! Display port mirroring

<Switch>display mirror group all